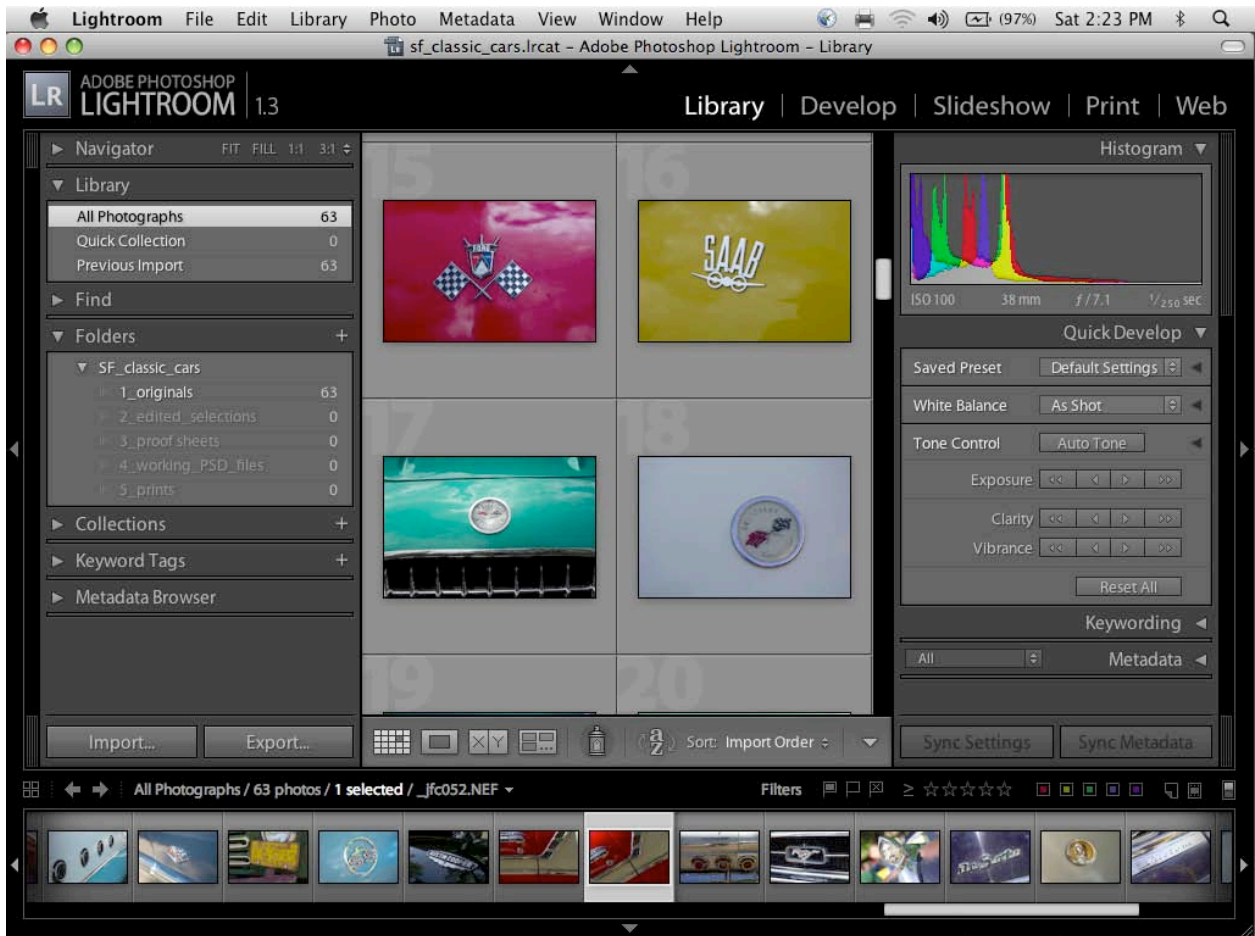


Welcome again to Jerry's tips. This month we explore the View Mode when working with Adobe Lightroom's *Library* viewing options.

The workflow for Adobe Lightroom is quite uncomplicated and has a logical layout of five workflow elements: Library, Develop, Slideshow, Print and Web.

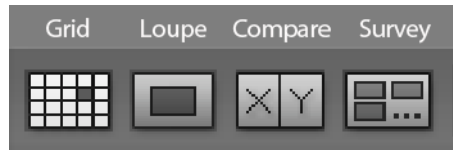
This month, let's focus within the Library display modes and options.



Here is the work area in the default Library grid presentation with two panels on the right and left and one at the bottom (filmstrip).

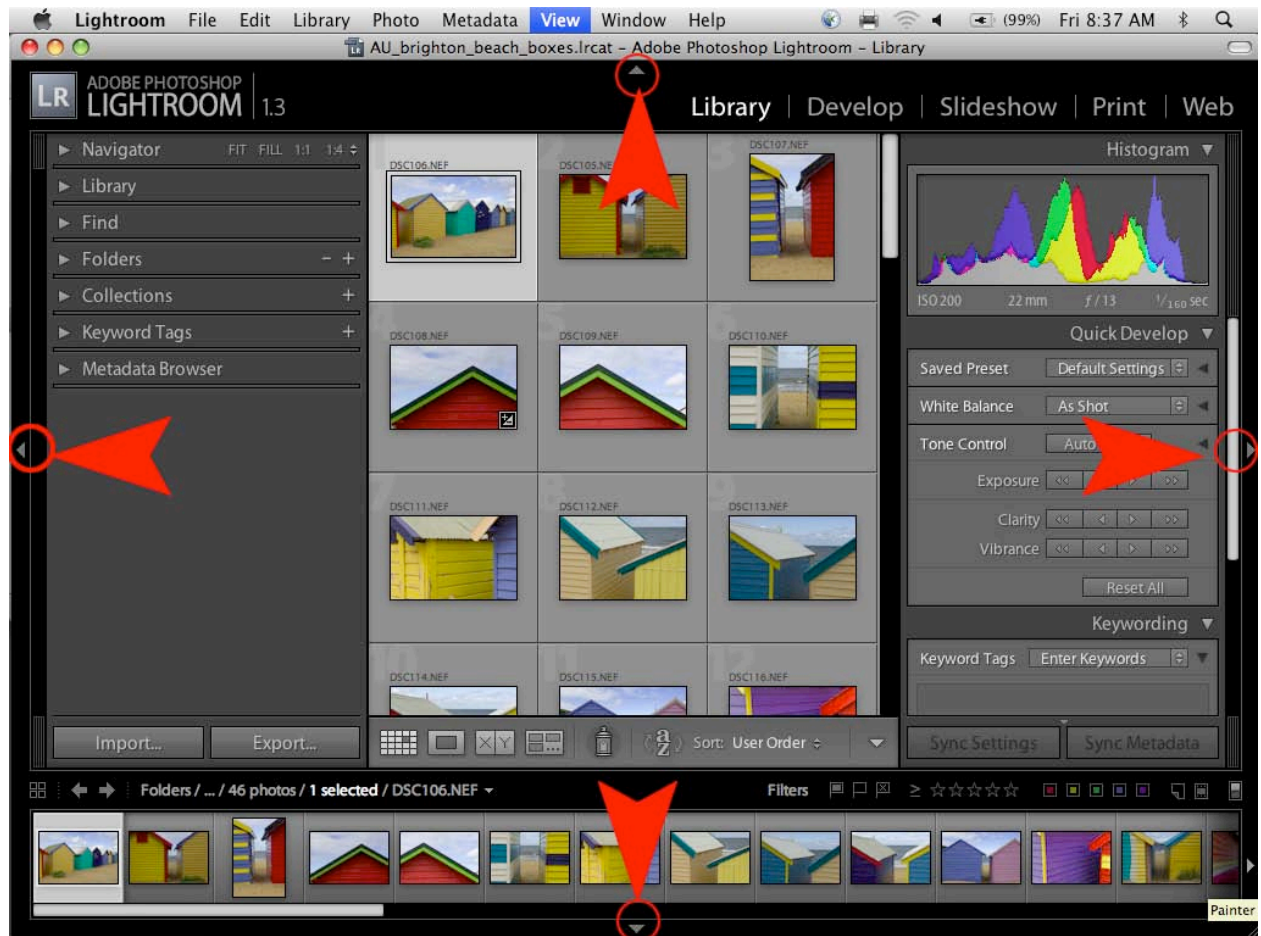
The central viewing area has four different settings, Grid, Loupe, Compare and Survey

When launching Lightroom, your view will be to the default **Library grid** view. A thumbnail grid is presented in the middle panel, which can simply be changed into one of four different presentation modes, **Grid, Loupe, Compare** and **Survey**. Clicking each of the buttons illustrated here will enable a different presentation mode for easy editing of your photography.

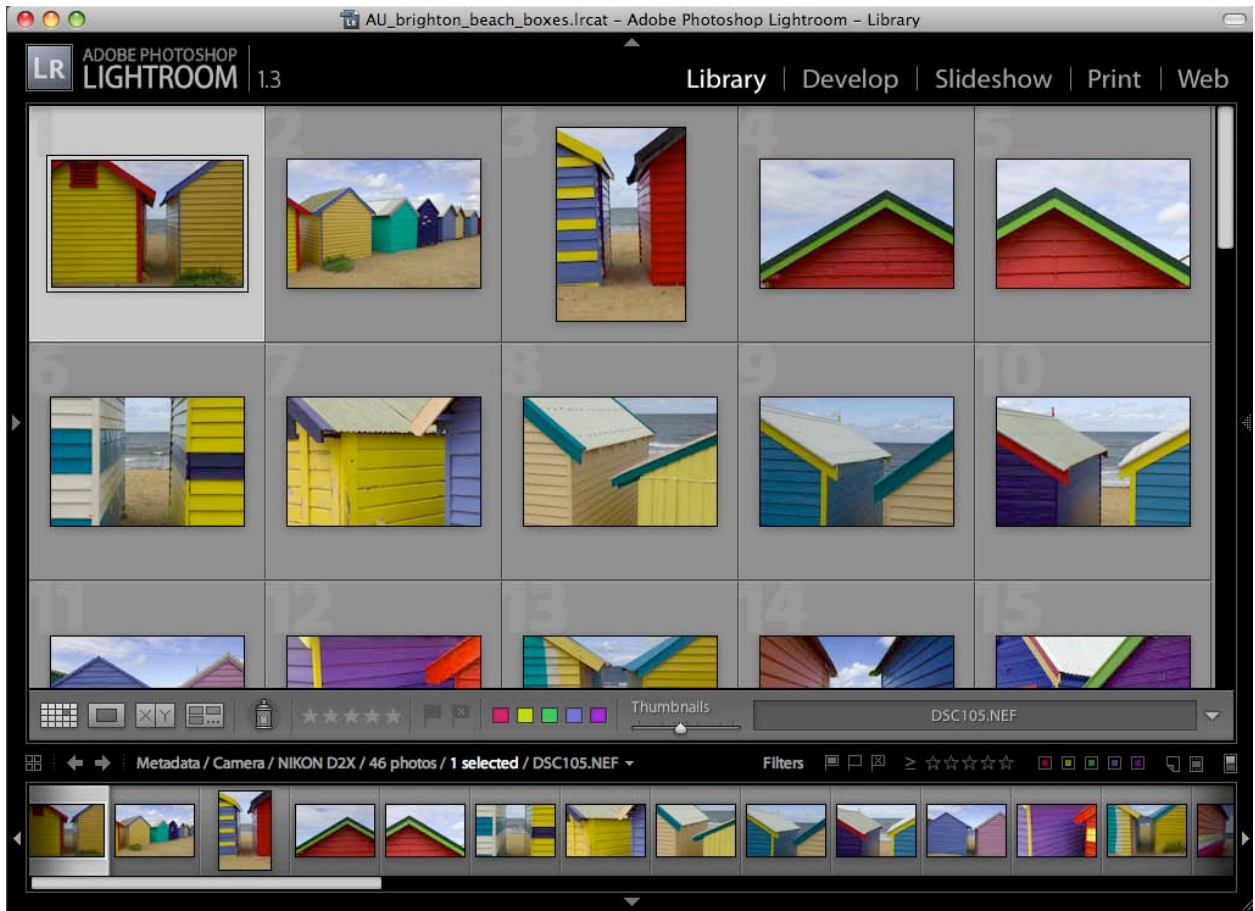


Navigation Tip

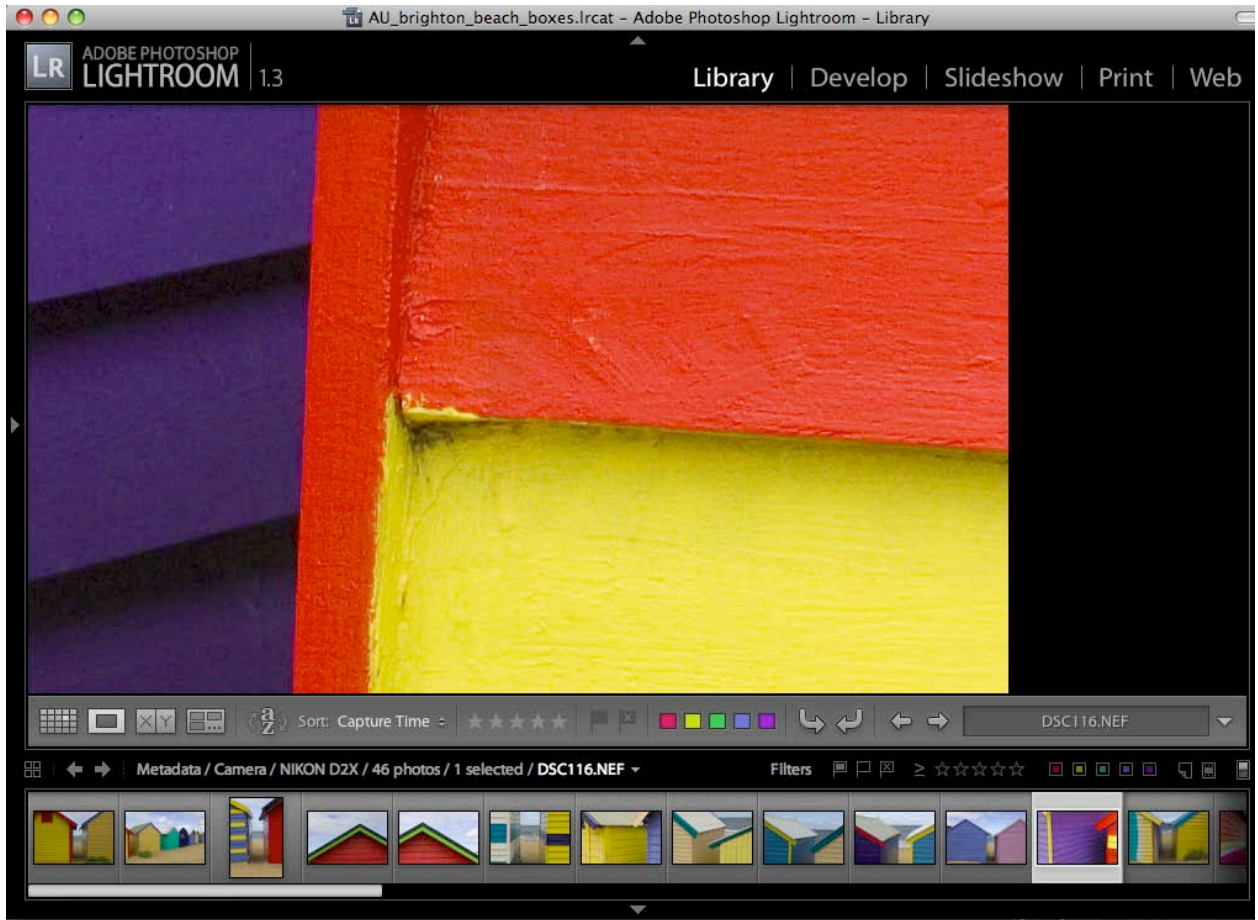
The small arrowheads on each of the four sides of the interface can be clicked to toggle on and off each of the panels to increase the screen real estate. Or use the Tab Key will push the left and right panel put of the screen viewing area.



The shortcut keys outlined here will have you accessing the different modes from keyboard quickly when editing your images.

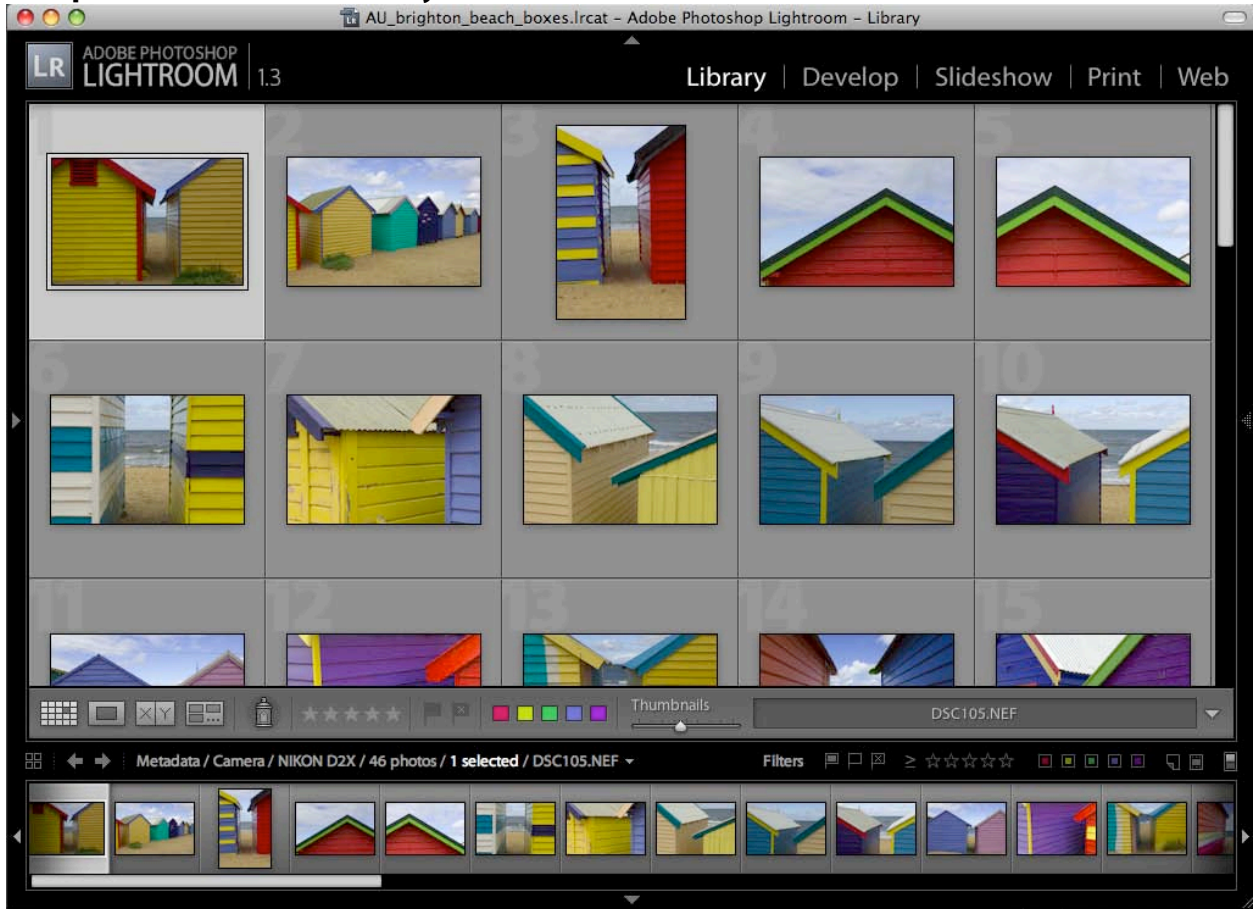


The **tab** key will move the left and right panels out of the way so that the middle panel will enlarge. Toggle the tab key again to bring back the left and right panels.

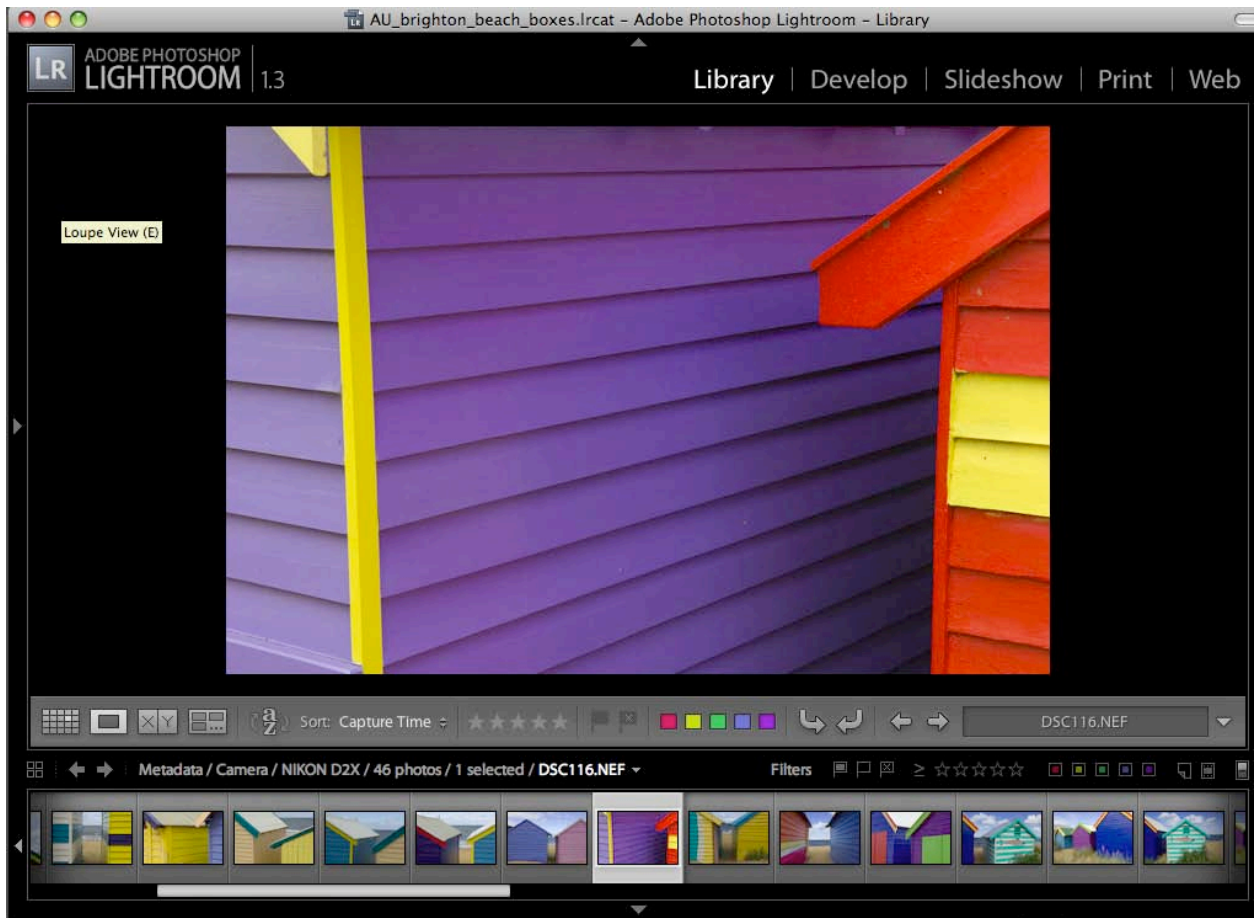


Clicking on the **z** key will **zoom** into the selected image at 1:1 view to check for focus and noise.

Use these shortcut keys to access each mode: **g** for **Grid** view, **e** for **Loupe** view, **c** for **Compare** view and **n** for **Survey** view.

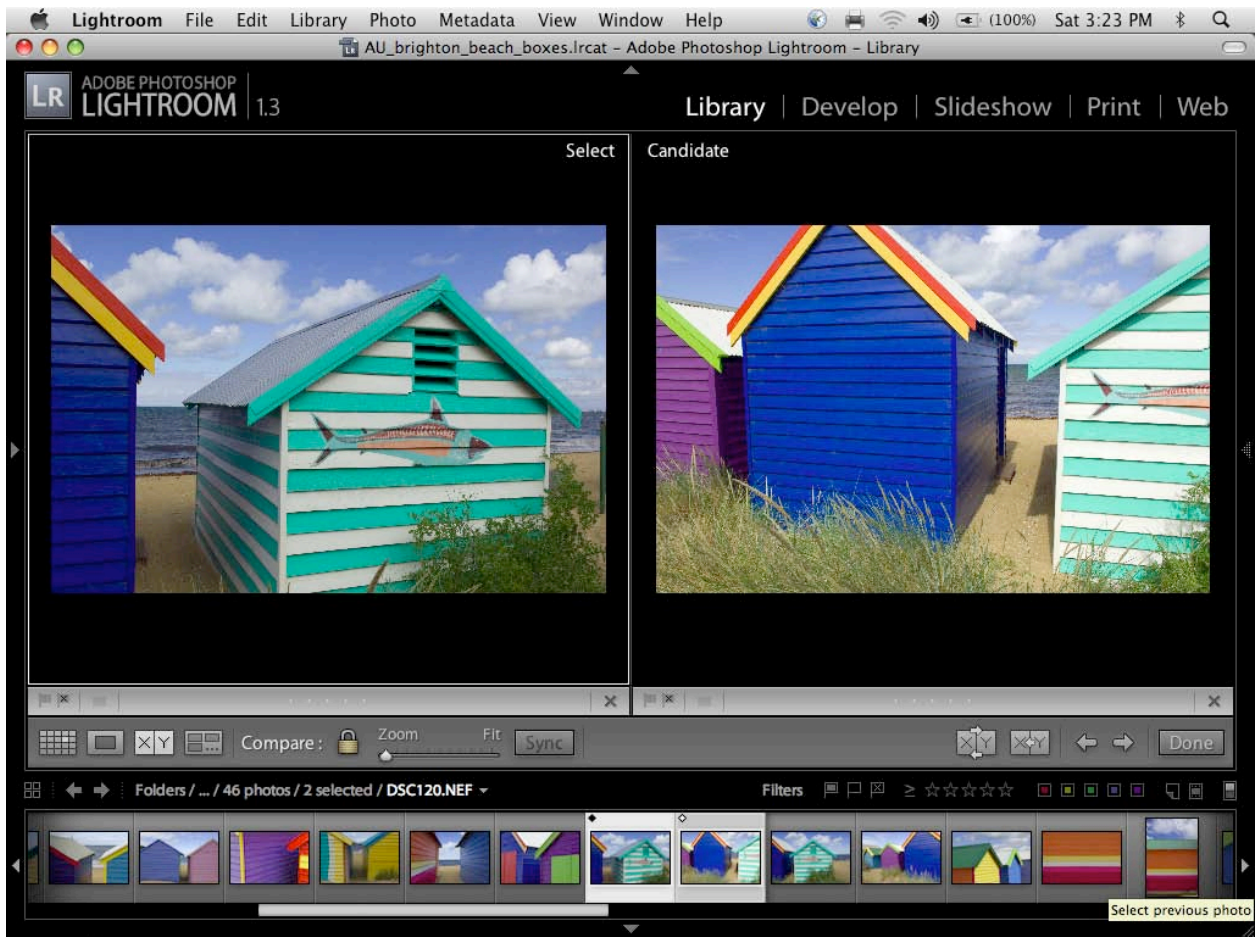


Tab key plus **g** for **Grid**



e for **Loupe** view

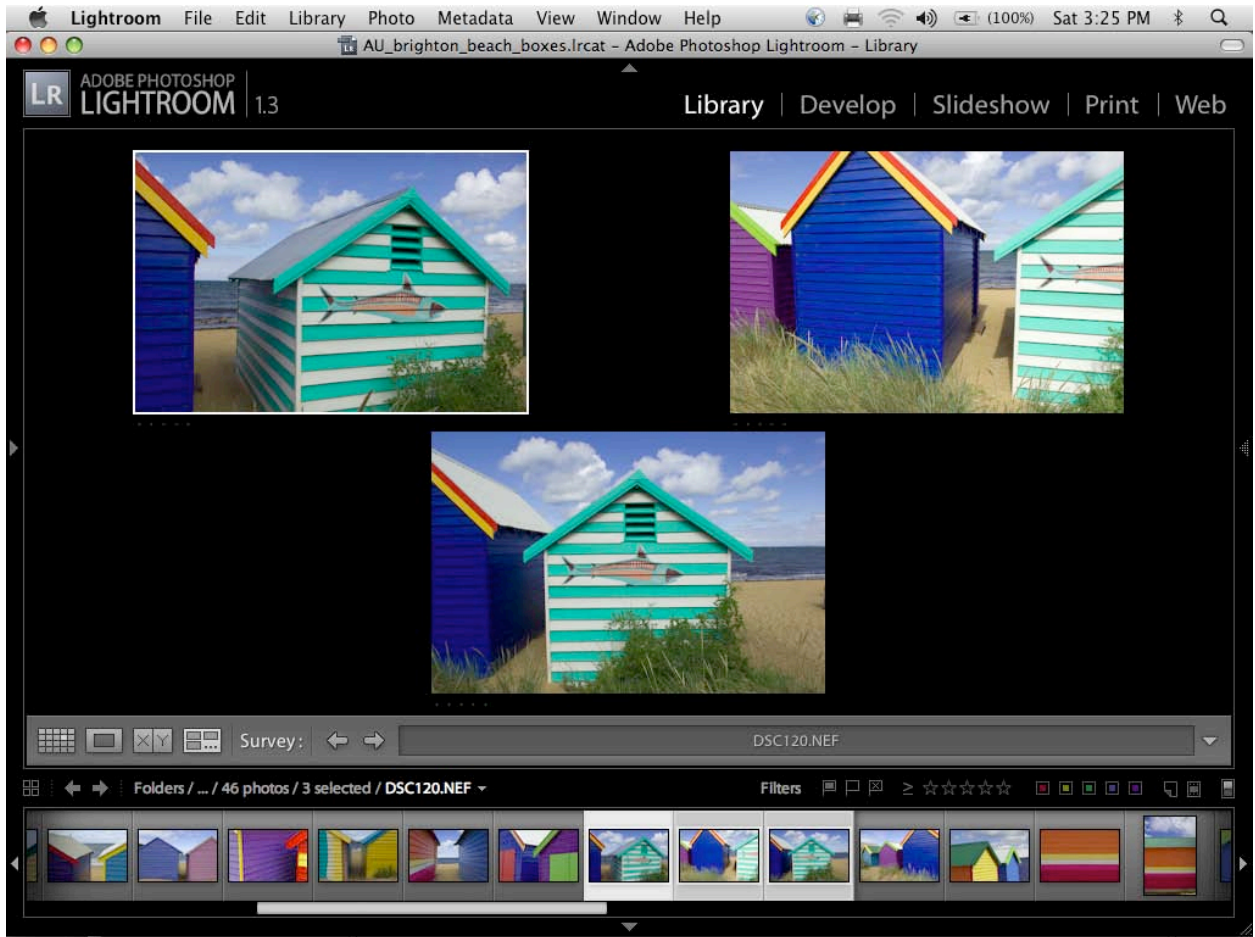
To access the **Loupe** mode, click on the second icon button or press the **e** key.. Within the loupe view, you can use the **arrow keys** to rapidly cycle through your images.



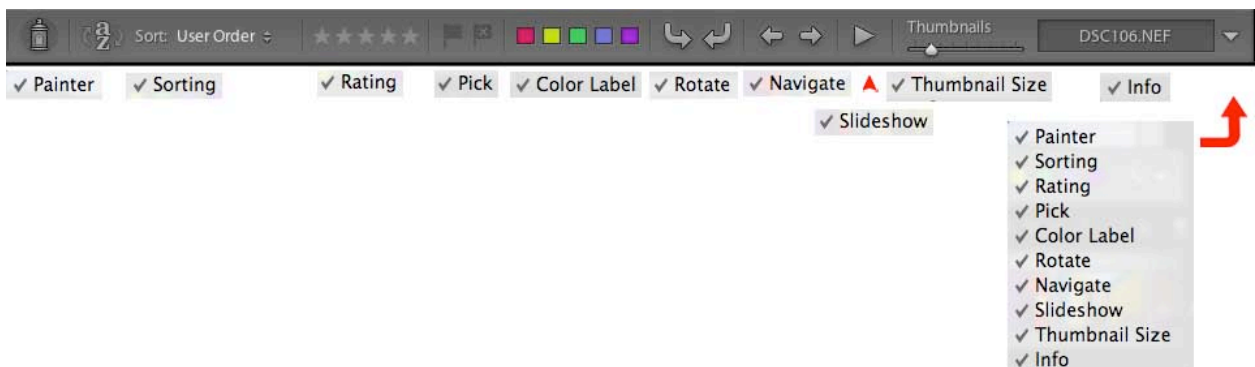
c for **Compare** view

Pressing the **c** key enables the **Compare** mode. When active the selected or highlighted image will be held and a “candidate” image will be viewed on the right hand side. Use the left or right arrow keys to move images in and out of the candidate view.

While in the **Compare** modeTo reselect another image as the current “select”, highlight an image in the bottom filmstrip display. A diamond shaped icon will appear in the upper left hand corner of the image in the filmstrip to indicate that it is the current select.

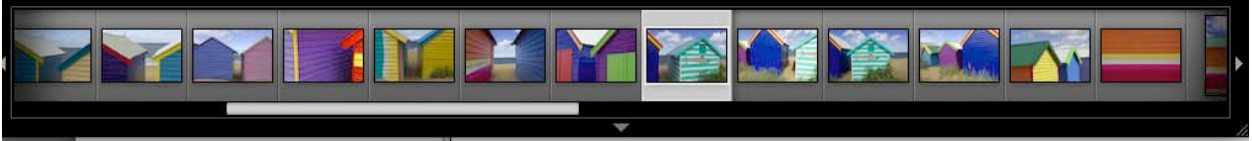


The **Survey** mode (n) can be enabled when you select multiple images from either the grid (g) mode or the filmstrip mode. As you roll the cursor over the displayed images in the survey view, an **x** will appear in the lower right hand corner. Clicking on the x will eliminate this image from the group.



Tool Bar Icons

One way to see everything in the tool bar is to move the panels out of the way by clicking the "tab" key. A better approach would be to only enable the features you will use to avoid tool bar clutter.



The Filmstrip

Located at the bottom of the display and contains adjustable sized thumbnails of all the images currently displayed in the Library, highlighting any thumbnail or a series of thumbnails enables the image(s) to be accessed in the main frame grid, loupe or compare feature set.

The Filmstrip thumbnails can be accessed in all of Lightroom's modes (**Library, Develop Slide Show, Print and Web**). To adjust the size of the thumbnails, click on the bar above the thumbnail row and pull the bar to the left to reduce and to the right to enlarge the thumbnails to reduce the size of the images.

©Jerry Courvoisier

Stay tuned for my Photographer's Workflow book this summer (2008)

Meanwhile if you have any questions, comments or concerns, please e-mail me at jer@jerrycourvoisier.com

All the best in the New Year!